

*Tele-Satsang

February 9th, 2014

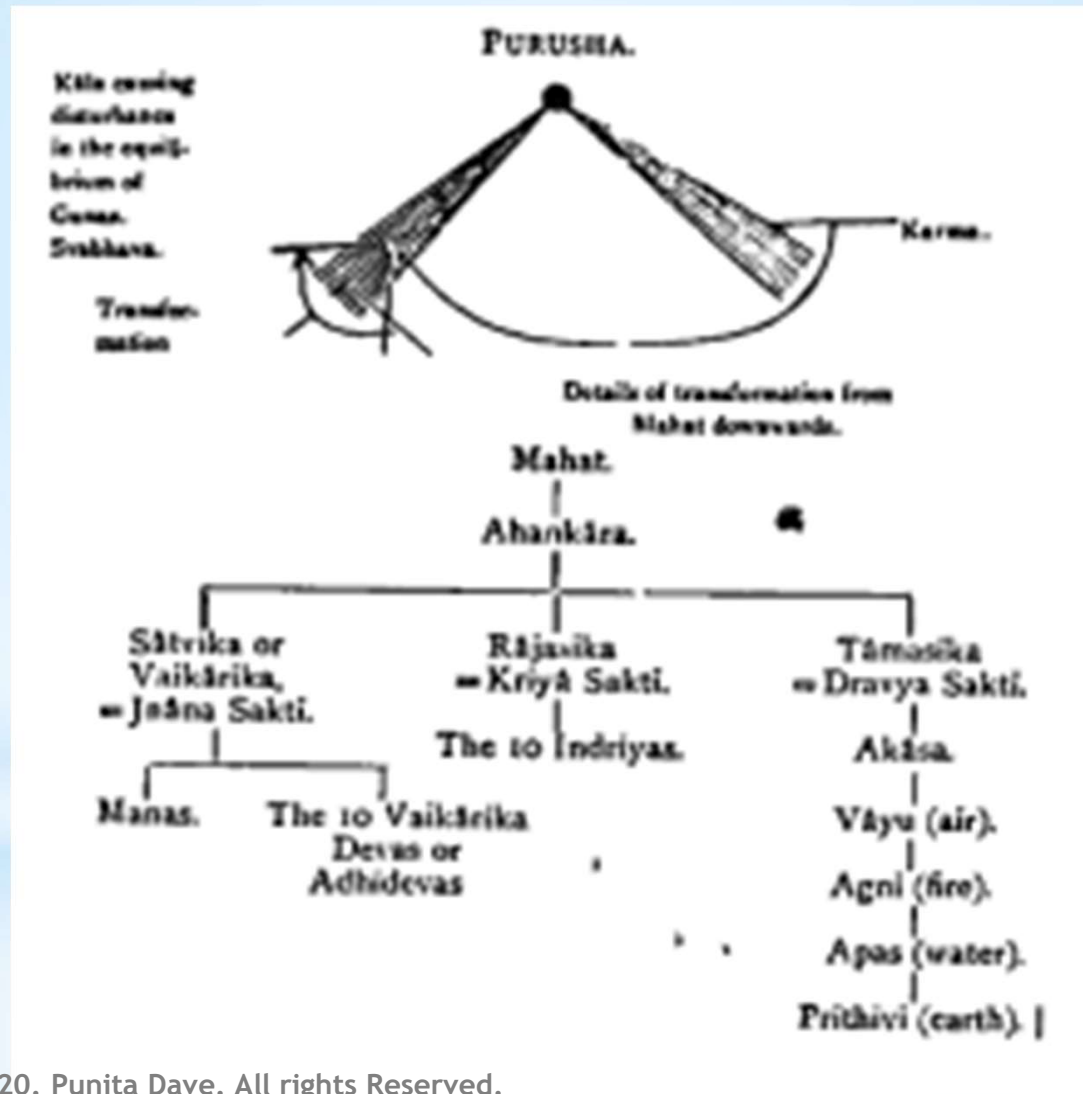
Copyright © 2014-2020. Punita Dave. All rights Reserved.



*Spiritual Hierarchy

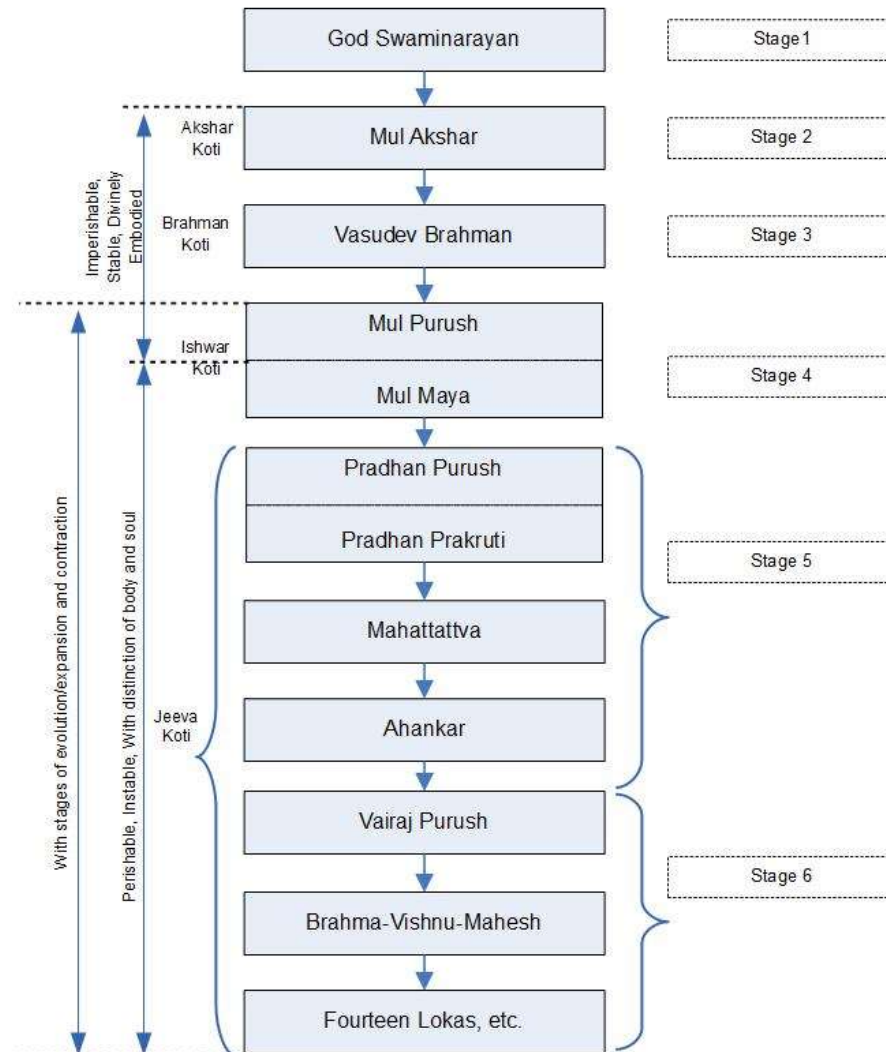
Copyright © 2014-2020. Punita Dave. All rights Reserved.

* Shreemad Bhagwat



* Swaminarayan Philosophy

Figure 1: Outline of Hierarchy



*Three Attributes

* Three Attributes

The 3 components	Characteristics	Adjective	Example
Sattva	Purity and knowledge	<i>Saattvik</i>	<i>Saattvik</i> man – lives in service of society with no expectation of recognition or reward or any ulterior motive
Raja	Action and passion	<i>Raajasik</i>	<i>Raajasik</i> man – lives more for personal gain and achievement
Tama	Ignorance and inertia	<i>Taamasik</i>	<i>Taamasik</i> man – has no problem about stepping on other's toes to get ahead or harming society

*Three Attributes

SELFISH AVERSION **Golden Balance** **SELFISH DESIRE**

Dull	T	S	Over excited
Depressed	A	A	Manic
Repressed	M	J	Obsessive
Damaged	A	A	Addicted
Neglect	S	A	Greed
Denied	S	S	Selfish lust
Underactive			Over-active

* Links

* Shreemad Bhagwat - <http://vedabase.net/sb/en>

* Hierarchy - <http://www.gutenberg.org/files/39442/39442-h/images/bhagap013.png>

* Greek tree -

* http://en.wikipedia.org/wiki/Family_tree_of_the_Greek_gods

* <https://ludios.org/greekgods/greekgods/greek-tree-full.png>

* Search for “Mahattattva” on Google

* Three attributes

* <http://en.wikipedia.org/wiki/Gu%E1%B9%87a>

* http://www.jacksanfernandes.com/yahoo_site_admin/assets/images/SRT-Def.353155848_std.gif

* http://www.chakras.org.uk/images/chakra_yoga_gunas_chakras.jpg