

*Tele-Satsang

February 23rd, 2014

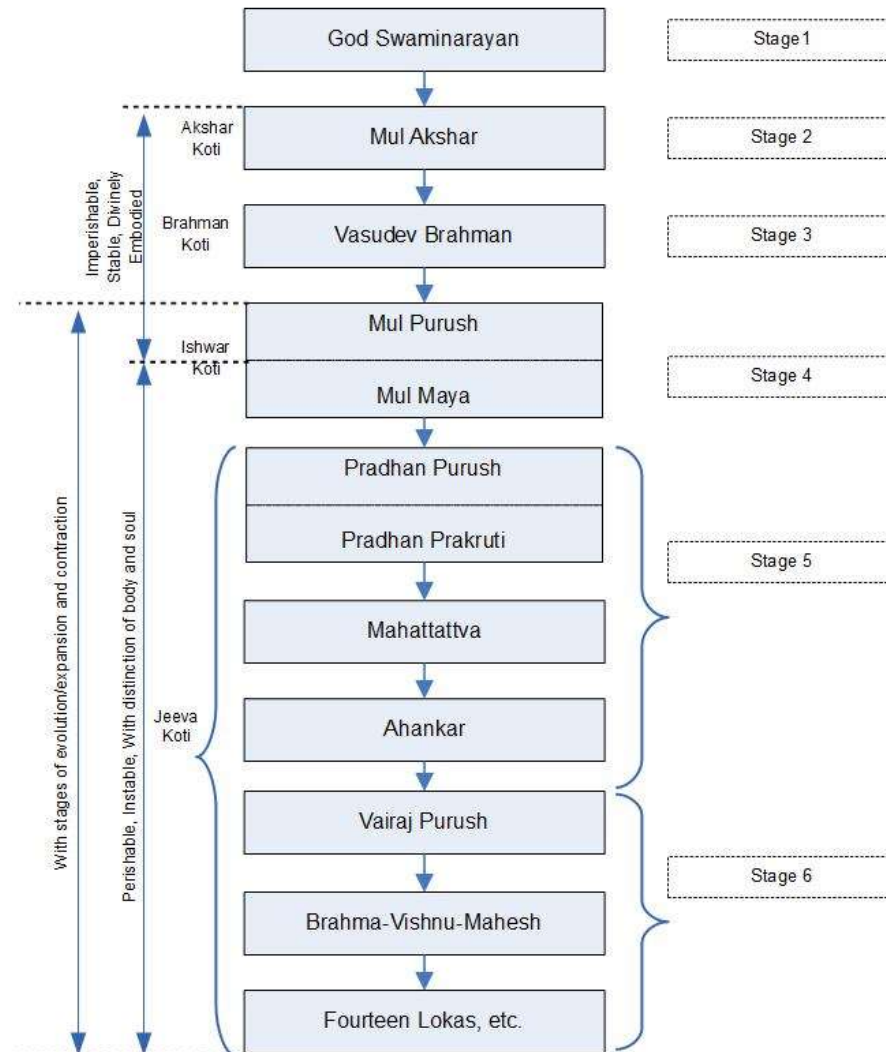
Copyright © 2014-2020. Punita Dave. All rights Reserved.



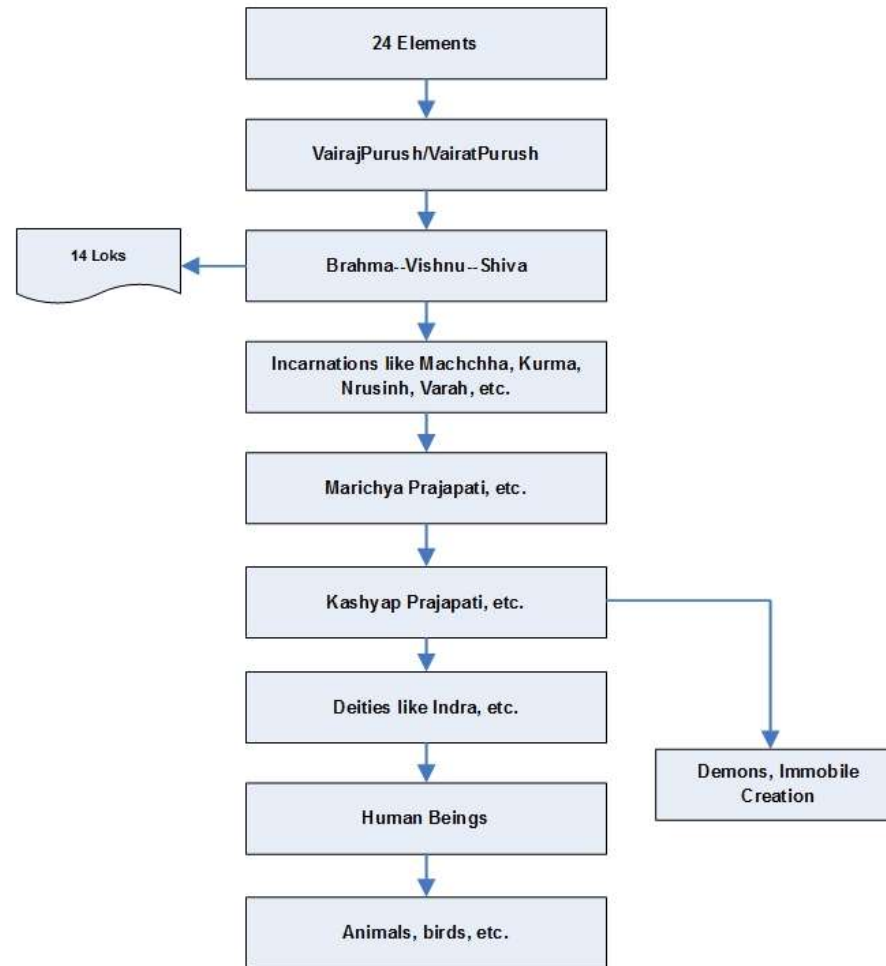
*Spiritual Hierarchy

* Swaminarayan Philosophy

Figure 1: Outline of Hierarchy



Stage 6



Note:

The one who is superior, is subtle than and cause of one's subordinates. Therefore Earth, Water, Fire, Air, Sky, Ahankar, Mahattattva, PradhanPurush, MulPurush, VasudevBrahman, and MulAkshar, are respectively greater than each other and are subtle than and cause of each other (as in the hierarchy, and all of them are embodied)

Moreover, each superior has infinite billions of immediate subordinates. But for sake of simplicity, only one is shown in each level.

Fourteen Loks

SatyaLok (Brahma's abode)

Taplok

Janlok (Bhrugva, etc. sages)

Maharlok (Aryama, etc. deities of manes)

Swarglok (Indra, Varun, Kuber, Agni, Surya, Chandra, Yamaraj, etc.)

Bhoovarlok (Deities of lower category)



Atal

Vital (Demons)

Sutal

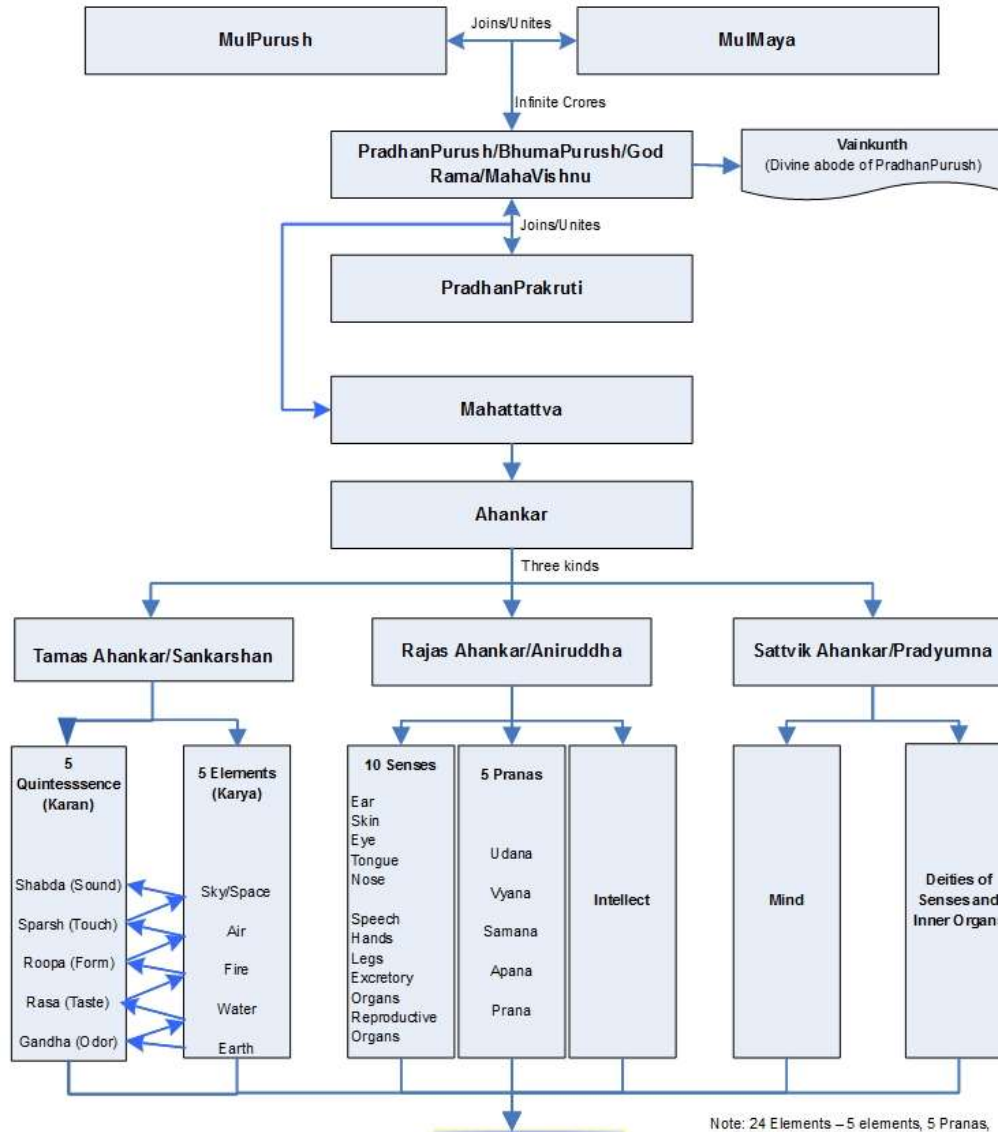
Talatal

Mahatal (Ghosts, evil spirits, nocturnal souls, etc)

Rasatal

Patal (Serpents)

Stage 5



Note: 24 Elements – 5 elements, 5 Pranas, 5 Organs of Action, 5 Organs of sense & perception, and 4 inner organs. All these are with body and form.

* Links

* Creation stories -

http://www.innovationslearning.co.uk/subjects/re/information/creation/creation_home.htm

* Shreemad Bhagwat - <http://vedabase.net/sb/en>

* Hierarchy - <http://www.gutenberg.org/files/39442/39442-h/images/bhagap013.png>

* Egyptian Gods

* <http://www.ancientegypt.co.uk/gods/explore/main.html>

* http://simple.wikipedia.org/wiki/List_of_Egyptian_gods_and_goddesses

* Greek Gods family tree -

* http://en.wikipedia.org/wiki/Family_tree_of_the_Greek_gods

* <https://ludios.org/greekgods/greekgods/greek-tree-full.png>

* http://en.wikipedia.org/wiki/Twelve_Olympians

* Search for “Mahattattva” on Google



*Backup Slides

* Shreemad Bhagwat

