

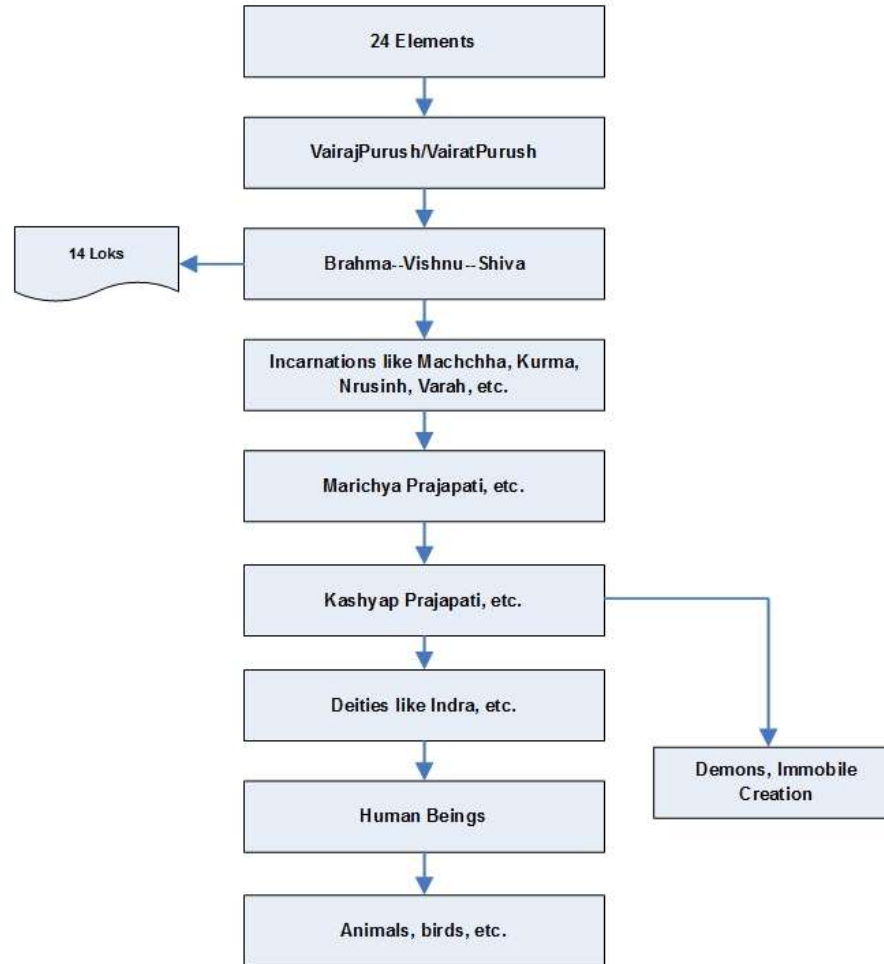
# \*Tele-Satsang

March 2<sup>nd</sup>, 2014



# \*Spiritual Hierarchy

## Stage 6



**Note:**

The one who is superior, is subtle than and cause of one's subordinates. Therefore Earth, Water, Fire, Air, Sky, Ahankar, Mahattattva, PradhanPurush, MulPurush, VasudevBrahman, and MulAkshar, are respectively greater than each other and are subtle than and cause of each other (as in the hierarchy, and all of them are embodied)

Moreover, each superior has infinite billions of immediate subordinates. But for sake of simplicity, only one is shown in each level.

## Fourteen Loks

**SatyaLok** (Brahma's abode)

**Taplok**

**Janlok** (Bhrugva, etc. sages)

**Maharlok** (Aryama, etc. deities of manes)

**Swarglok** (Indra, Varun, Kuber, Agni, Surya, Chandra, Yamaraj, etc.)

**Bhoovarlok** (Deities of lower category)



**Atal**

**Vital** (Demons)

**Sutal**

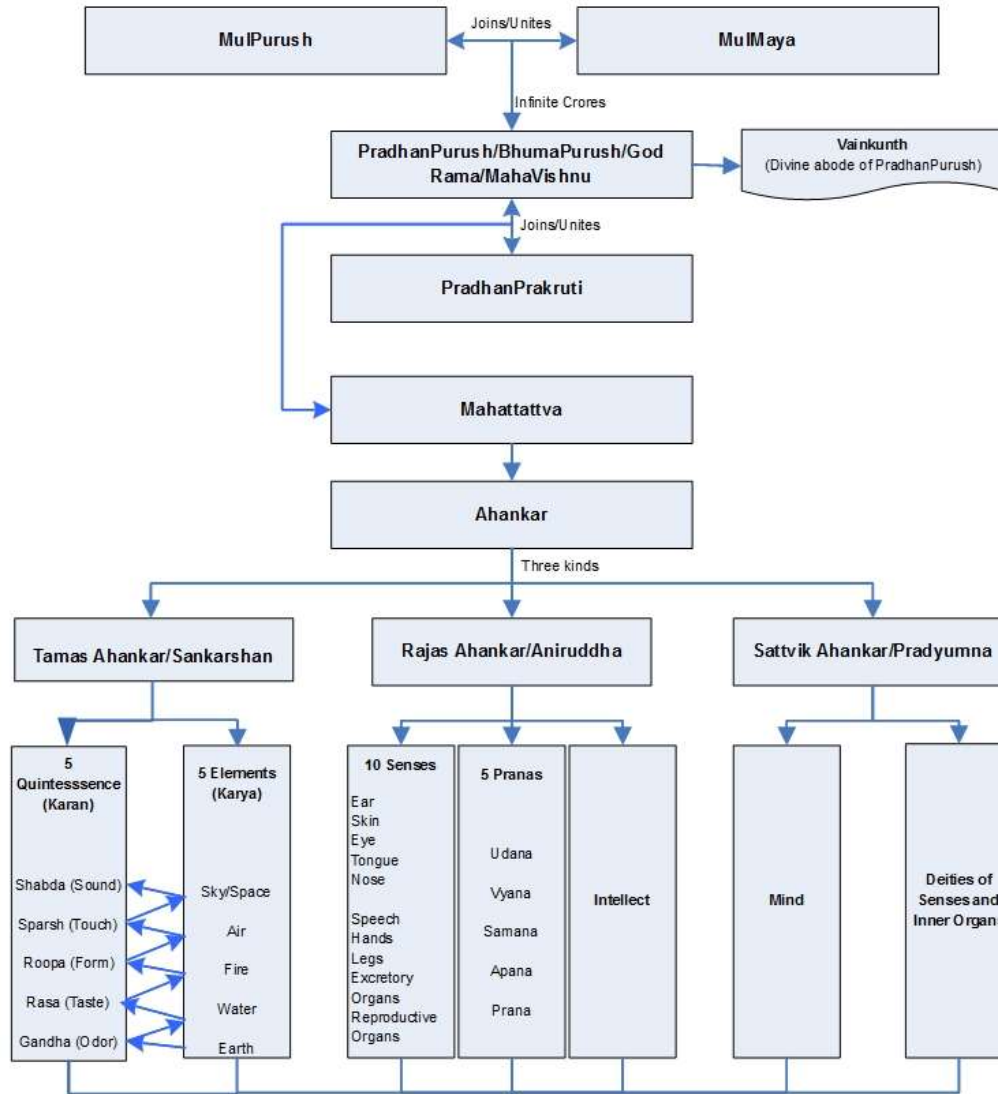
**Talatal**

**Mahatal** (Ghosts, evil spirits, nocturnal souls, etc)

**Rasatal**

**Patal** (Serpents)

## Stage 5



Note: 24 Elements – 5 elements, 5 Quintessence, 5 Senses of Action, 5 Senses of perception, and 4 inner organs. All these are with body and form.

# \* Links

\* Irreducible complexity -

[http://en.wikipedia.org/wiki/Irreducible\\_complexity](http://en.wikipedia.org/wiki/Irreducible_complexity)

\* Constructal Law -

[http://en.wikipedia.org/wiki/Constructal\\_law](http://en.wikipedia.org/wiki/Constructal_law)

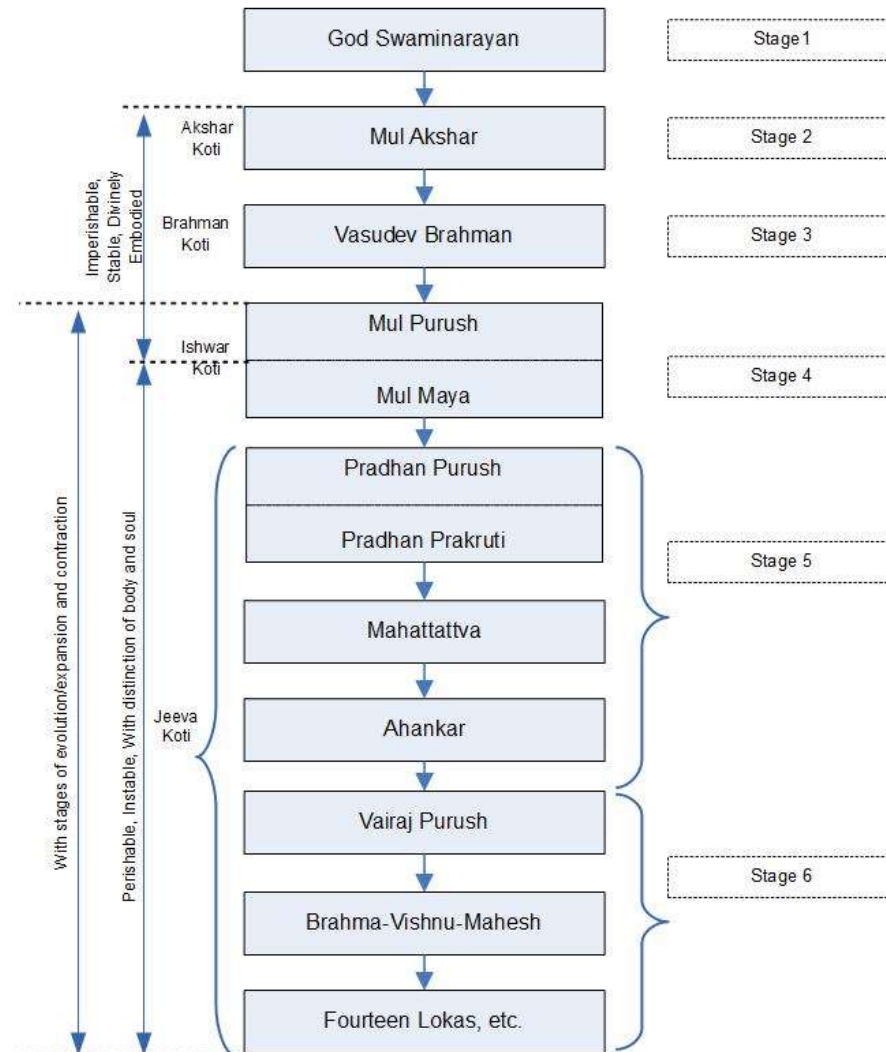
\* Cosmological Natural Selection Theory -

[http://en.wikipedia.org/wiki/Lee\\_Smolin](http://en.wikipedia.org/wiki/Lee_Smolin)

# \* Backup Slides

# \* Swaminarayan Philosophy

Figure 1: Outline of Hierarchy





# \* Shreemad Bhagwat

